

**X F**







# XF

## THE SPORTS SEDAN

Sleek, dynamic, daring, the XF is a fusion of sports car styling with outstanding luxury sedan comfort. The inspired engineering of the XF has won the vehicle over one hundred international awards. It has proved itself a game-changer in the world of automotive design. More than a machine, the XF combines Jaguar cars' renowned flair for style and luxury with a genius for technological innovation, setting the standard that other sports sedans can only aspire to.

XF | XF SUPERCHARGED | XFR

VEHICLE SHOWN: XF IN POLARIS WHITE



## MOVING DESIGN

With its glowing Bi-function HID headlamps, outlined with crystal white daytime running LEDs, and its toned bodyshape, the XF always looks ready for action. Its primed, nose-down attitude, power vents and aerodynamic lines are more than an athletic pose, they've been precision-honed through exhaustive design testing to optimize air flow efficiency. Each curve and contour has been refined to produce top aerodynamic performance, helping to reduce fuel consumption and emissions. Beautiful, intense, potent; first the XF captures your imagination and then your heart.



VEHICLE SHOWN ABOVE: XF IN POLARIS WHITE  
VEHICLE SHOWN LEFT: XF IN POLARIS WHITE WITH OPTIONAL PORTFOLIO SPORT PACK





VEHICLE SHOWN: XF IN POLARIS WHITE







## THE XF COLLECTION

For modern sporting elegance and refined power, the XF has the style, the attitude and the engine. With optional enhancement packs, you can boost your XF sporting looks even further.

A Portfolio Sport Pack incorporates a unique lower front bumper profile and a black grille, as well as a trunklid spoiler and streamlined side sills for a more assertive look. It comes with a unique 19" Aquila-style alloy wheel or the stunning 20" Hydra-style wheel.

The XF Supercharged boasts an even more powerful performance. With a more aggressive look to luxury, the exterior of the XF Supercharged has hood louvers embossed with 'Supercharged' script, a quad exhaust system and High Performance Braking System, and 20" Draco alloy wheels all matched by an even more luxurious interior with soft grain leather and 12 speaker Meridian™ Surround Sound System.

For the optimum combination of stunning appearance and performance, the XFR is the ultimate sports sedan. This is reflected in its aggressive bearing, sculpted front air intakes, Gloss Black front grille, sculpted rear and lower valance and quad exhausts. The Black Pack offers the ultimate in emphatic sport styling with a Gloss Black finish to the windows, front grille surrounds and front bumper apertures. Dark grey Draco alloy wheels, a black trunklid and red brake calipers complete the distinctive look. The XFR optional Speed Pack includes a unique front bumper aero splitter and a specialized spoiler.



# COMBINING TECHNOLOGIES FOR EFFICIENCY

The XF is renowned for its performance, refined drive and effortless power and offers a choice of engines to suit the needs of every driver and driving style, whether improved fuel economy or power and performance are the priority.

Intelligent Stop/Start technology features on the V6 and V8 Supercharged engines. The 8-speed electronic automatic transmission achieves almost imperceptible, superfast gear shifts.

|                        |                      | XF                           | XF [3.0]                     | XF [3.0] AWD                     | XF SUPERCHARGED              | XFR                          |
|------------------------|----------------------|------------------------------|------------------------------|----------------------------------|------------------------------|------------------------------|
| Engine                 |                      | 2.0 LITER i4<br>TURBOCHARGED | 3.0 LITER V6<br>SUPERCHARGED | 3.0 LITER V6<br>SUPERCHARGED AWD | 5.0 LITER V8<br>SUPERCHARGED | 5.0 LITER V8<br>SUPERCHARGED |
| Power                  | HP                   | 240                          | 340                          | 340                              | 470                          | 510                          |
| Torque                 | lb-ft                | 251                          | 332                          | 332                              | 424                          | 461                          |
| Acceleration (0-60mph) | seconds <sup>†</sup> | 7.5                          | 5.7                          | 6.1                              | 4.9                          | 4.7                          |
| Top Speed              | mph <sup>†</sup>     | 121                          | 121                          | 121                              | 155                          | 155                          |
| Fuel Economy           | City mpg*            | 19                           | 17                           | 16                               | 15                           | 15                           |
|                        | Highway mpg*         | 30                           | 28                           | 26                               | 23                           | 23                           |

<sup>†</sup>Always follow local speed limits.

\*These figures are correct at time of going to press. All figures are EPA estimates. Actual mileage may vary.





## DRIVING DYNAMICS

Responsive, powerful, driver-focused, the XF utilizes a range of technologies to assist, improve and enhance the driving experience. The vehicle acclaimed handling is produced through combining exceptionally stiff body architecture, aerodynamic form and innovative suspension systems.

The XF **Adaptive Dynamics** system, available on a selection of engines, continuously monitors the suspension, varying the damping to suit the conditions, whether cornering, navigating potholes or accelerating on the highway. The system calculates the appropriate suspension settings up to 500 times per second, adjusting the dampers to help keep the car as flat, stable and secure as possible.

With the **Servotronic steering system**, the XF delivers pinpoint maneuverability at low speeds then reduces assistance at higher speeds for confident handling.

VEHICLE SHOWN: XF IN INDIGO WITH OPTIONAL PORTFOLIO SPORT PACK



## EXCEPTIONAL HANDLING



Wherever you are, wherever you go, the XF delivers supreme handling and performance. **JaguarDrive Control™** offers selectable modes to suit the driver's preferences or the prevailing road conditions. Sport Mode adjusts throttle and steering response for a more involving drive. Dynamic Mode co-ordinates the vehicle's control systems to deliver an engaging driving experience. Winter Mode is designed to automatically dampen acceleration to achieve more gradual traction in slippery or adverse conditions, so tire grip is increased and skid risk reduced.<sup>1</sup>

The XF **Dynamic Stability Control (DSC)** has two settings. The default setting comes into play as soon as it detects the wheels slipping, applying braking to individual wheels and reducing engine torque. The Trac DSC setting allows some slipping and overspin before it intervenes – this allows for a sportier drive and is also essential with snow chains.<sup>1</sup>

**Instinctive All Wheel Drive™ (AWD)** available with the 3.0 liter Jaguar V6 Supercharged engine is designed to help maximize traction in slippery and adverse conditions. To maintain the feel of a rear-wheel drive XF, the AWD system delivers most of the torque to the rear wheels until it intelligently senses a need for balancing more power to the front. By reading road conditions it detects loose grip situations and can deliver up to 50 percent of torque to the front wheels.<sup>1</sup>

To develop the AWD system engineers spent 18 months testing at a dedicated Jaguar Land Rover facility on the edge of the Arctic Circle. There, average winter temperatures never rise above freezing – at times they plunge to -36° Fahrenheit – making it the ideal location to assess extreme operating conditions.

VEHICLE SHOWN: XF IN INDIGO



VEHICLE SHOWN: XF IN SALSA RED



# ALL WHEEL DRIVE IS ALWAYS ALL JAGUAR

Jaguar Instinctive All Wheel Drive™ is a continuously variable system that senses driver inputs, vehicle speed, steering angle and braking to maximize traction and driver control. It allows the driver to have the confidence of all wheel drive, adjusting front-to-rear torque distribution “on demand”, while still maintaining sports car performance when conditions allow.<sup>1</sup>

The system continually monitors road conditions and, when traction is available, applies more torque to the rear wheels, helping to provide signature Jaguar performance and agility.

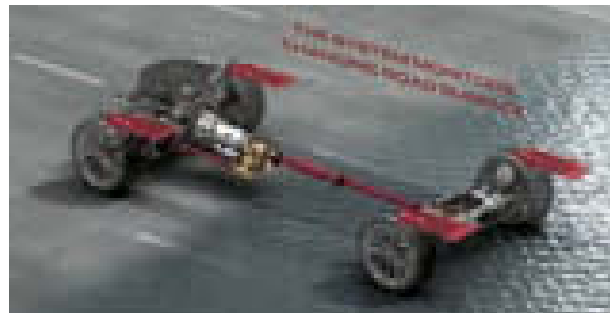
In poor grip situations the system reacts instinctively, with no adjustments required by the driver. If low traction is sensed at the rear wheels, torque is quickly but progressively redistributed to help maintain a reassuring connection with the road.

Jaguar Instinctive All Wheel Drive™ enables smooth acceleration up a hill, even if the road surface is compromised.

1



2



3



4



1. Jaguar Instinctive All Wheel Drive™ continuously monitors road conditions.
2. Moving from a wet surface to a dry surface, torque is redistributed to the rear wheels to maintain Jaguar performance when all wheel drive is no longer required.
3. Jaguar Instinctive All Wheel Drive™ maintains rear wheel bias whenever possible.
4. Jaguar Instinctive All Wheel Drive™ monitors road conditions and combined with the vehicle dynamic stability systems, applies torque to each wheel as required, constantly adjusting for the best supply of traction to the road surface.





## XFR

For the ultimate in performance the XFR takes the XF to another dimension. With an acceleration of **0-60mph in 4.7 seconds** the XFR intensifies the sporting experience without compromising any of the comfort.<sup>2</sup>

Behind the front bumper with enlarged air intakes is Jaguar's 5.0 liter V8 510HP Supercharged engine. This all-aluminum quad-cam powerplant delivers performance and efficiency. Its Intelligent Stop/Start technology and 8-speed electronic automatic transmission are designed to help reduce fuel consumption, yet it's powerful enough to produce an impressive 510HP and 461 lb.ft. of torque.

The XFR optional Speed Pack recalibrates the engine and transmission to take the vehicle top speed (Vmax) from 155mph to 174mph.<sup>2</sup>

VEHICLE SHOWN: XFR IN ITALIAN RACING RED





## INTELLIGENT SAFETY

The safety systems of the XF are designed to be anticipatory, utilizing an array of technological features to assist the driver in dealing with the unexpected. Dynamic Stability Control (DSC) maximizes stability of the XF when it detects the wheels slipping. Electronic Brake Force Distribution measures load weight and distributes braking force to front and back wheels accordingly.

**Adaptive Cruise Control (ACC)** optional on all of the XF range, uses a radar in the front bumper to monitor the vehicle in front, automatically adjusting the speed to maintain a constant distance.<sup>1</sup>

**Emergency Brake Assist (EBA)** is designed to work with Adaptive Cruise Control to detect the severity of a stopping situation and initiate an emergency brake maneuver as necessary.<sup>1</sup>

**Adaptive Front Lighting**, when specified on the XF, enhances night-time driving. Sensors react to the car's speed and steering input to deflect the headlamp beams casting light deeper and wider to help give added confidence at night.<sup>1</sup>

The **Intelligent High Beam** system automatically senses when high beam light is needed and will turn on and off without driver input. As a car approaches from the opposing direction, the system automatically switches from high beam to dipped beam.<sup>1</sup>

An optional **Blind Spot Monitor** uses radar sensors to remotely cover areas that cannot be seen either directly or in the mirror, and is designed to alert the driver to cars overtaking with an amber warning icon in the external mirrors.<sup>1</sup>

The XF body structure uses 25 different grades of steel. Boron, an element 900 percent stronger than regular mild steel, is used to help create a ring of safety around the occupants of the XF. A total of eight airbags help to add further protection.



## SOUNDS ALIVE

Turn on the superb audio system of the XF and the cabin comes alive. Ten strategically placed speakers deliver 250W of pure audio fidelity, surrounding you with exceptional sound quality.

Also available are two systems engineered by Meridian™, the ultimate audio specialists. Both are designed and created specifically for the unique interior space of the XF. Meridian's™ 380 watt Sound System with 11 loudspeakers produces a seminal audio experience while the incredible 825 watt Surround Sound System uses no less than 17 loudspeakers (including subwoofer) to create sound that is just as the artist intended. Meridian™ achieves this by benchmarking acoustic performance against real musical instruments.

Pioneered by Meridian™, Trifield™ technology included with the Premium Surround Sound System ensures a perfect central image for each occupant and produces a holistic sound within the cabin to deliver a concert-like experience.

\*Trifield' and the 'three fields' device are trademarks of Trifield Productions Ltd.









## CONNECT WITH XF

The XF brings complete control to your fingertips using a **7 inch color Touch-screen**. Simple and intuitive, it ensures you are never more than a few selections from any control: satellite navigation, climate control, Bluetooth® telephone connectivity or in-car audio.<sup>3</sup>

At the heart of the XF's multimedia functions is a **30GB Hard Disk Drive**. As well as holding the car's navigation system, it can store up to ten CDs of uploaded music in uncompressed format for enhanced audio quality.

The available XF **navigation system** provides easy updating and access to maps and data. It even learns your favourite journeys. Deviate from a proposed route three times and the system will offer your favoured route as an option. Eco route helps you choose the most fuel efficient route by analyzing the proposed journey, displaying three routes and suggesting the most economical one.<sup>3</sup>

To make things even easier, the optional **Interactive Voice** system - Say What You See - helps the driver to use and interact more easily with the XF. It displays voice prompts on the Touch-screen for you to vocally control phone calls, navigation or audio.<sup>3</sup>

INTERIOR SHOWN: XF WITH UPPER FASCIA IN WARM CHARCOAL WITH IVORY CONTRAST STITCH AND KNURLED ALUMINUM WITH GLOSS RICH OAK VENEER



## ALIVE INSIDE

Settle into the XF and the softly pulsing 'start' button greets you. Push and the engine engages, the XF wakes. Even as you lift your finger, the precision-milled aluminum **JaguarDrive Selector™** rises snugly into the palm of your hand. The engine gently throbs as the air vents, invisible until needed, roll open in unison and cool **Phosphor blue halo lighting** ignites to pick out the interior controls. Let the excitement begin.

Ergonomically optimized, the cabin of the XF is a space both contemporary and luxurious, created to focus on driver and passenger needs and to excite the senses. Comfort and quality reign supreme with form-hugging seats, real wood veneers, Piano Black finishers and aluminum surfaces.

From the premium floor carpet and side trims to the polished stainless steel finishers, there is luxuriousness throughout the XF. Thoughtful design encompasses every feature. The steering wheel position adjusts at the touch of a button, along with the seat and mirror. These settings can be memorized for different drivers. The XF welcomes you to the drive ahead.



## A SPORTIER XF



Matching the powerful character of the XF, a Sport Interior Pack is also available featuring double stitched soft grain leather Sports seats which reshape and adjust to create a perfect fit. From individually fine-tuned lumbar support to powerfully sculpted side bolsters, they deliver exceptional lateral support during hard cornering. With polished metal sports pedals and Piano Black finishing the XF's Sport Interior Pack is simply stunning.

INTERIOR SHOWN: XF SPORT PORTFOLIO INTERIOR PACK WITH RED ZONE AND WARM CHARCOAL SOFT GRAIN LEATHER SEATS WITH RED ZONE CONTRAST STITCH, UPPER FASCIA IN WARM CHARCOAL WITH RED ZONE CONTRAST STITCH, KNURLED ALUMINUM WITH PIANO BLACK VENEER AND OPTIONAL MERIDIAN™ SURROUND SOUND SYSTEM



## CUSTOMIZATION

Jaguar offers a stunning collection of different color, trim and veneer choices. The XF is available in three model choices: XF; XF Supercharged and XFR, to enable you to create the XF that's just right for you.



# EXTERIOR COLOR OPTIONS

From Polaris White to Caviar, from the race inspired colors of Italian Racing Red to British Racing Green, Jaguar offers an outstanding paint spectrum to bring your XF to life. With numerous color choices in either solid or metallic finish, this is the opportunity to make it your XF.

## SOLID

Ebony



## METALLIC

Indigo†



Crystal Blue\*



Polaris White‡



Ultimate Black††



Stratus Grey††



Carnelian Red†



\*Metallic paint †Xirallic paint ‡Available on XFR

‡Available from January 2013

For availability please consult your local Jaguar retailer.



Cashmere\*



Rhodium Silver\*†



Satellite Grey\*†¹



Lunar Grey\*†



Caviar†



## RACE INSPIRED

Italian Racing Red††



British Racing Green††



# ALLOY WHEELS

Nothing makes your XF more distinctive or individual than the choice of alloy wheels. Jaguar offers an exciting range of stunning alloy wheels to suit all personal tastes and performance requirements.



18" VELA  
(XF)



18" LYRA  
(XF)



19" ARTURA  
(XF)



19" ARTURA CHROME  
(XF)



19" CARAVELA  
(XF)



19" AQUILLA  
(XF)



20" HYDRA  
(XF)



20" DRACO SILVER FINISH  
(XF, XF Supercharged)



20" DRACO DARK GREY FINISH  
WITH DIAMOND TURNED RIMS  
(XF, XF Supercharged)



20" NEVIS  
(XFR)



## SEAT TRIM

Warm Charcoal soft grain  
(also available in Bond grain)

Barley soft grain  
(also available in Bond grain)



Dove Bond grain

Ivory soft grain leather

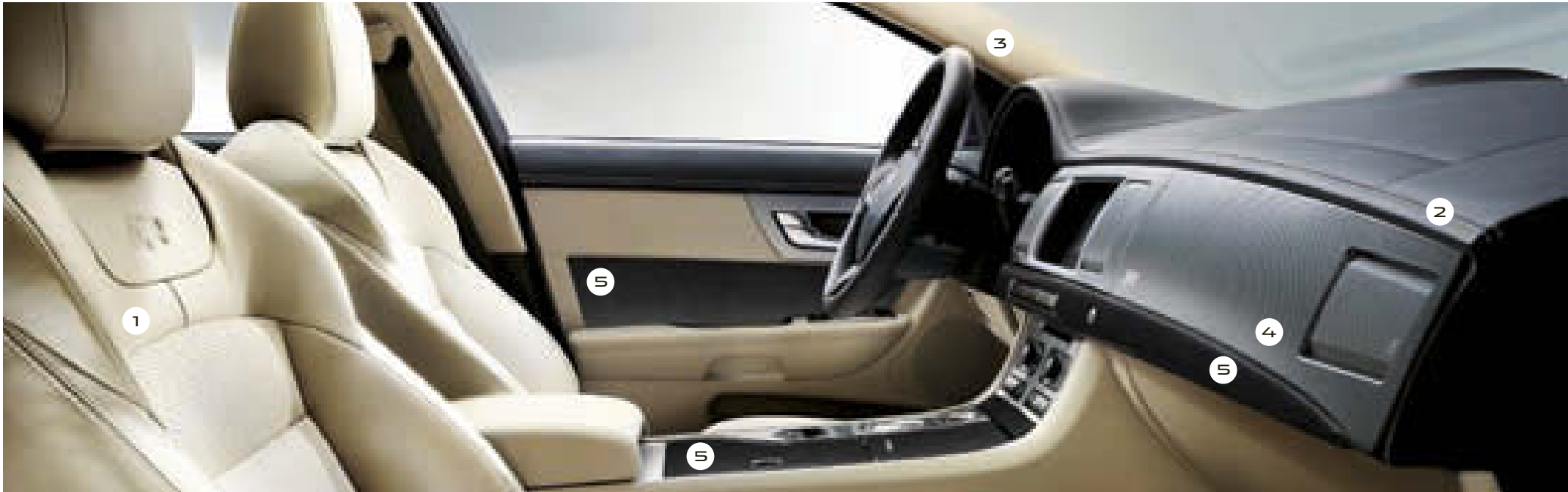
London Tan soft grain

Red soft grain

# XF INTERIOR COLOR COMBINATIONS

## CUSTOMIZATION

### XFR INTERIOR



1. SEAT



Ivory

2. UPPER FASCIA WITH STITCH



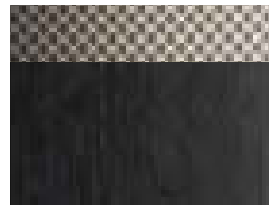
Warm Charcoal with Ivory

3. HEADLINING



Canvas

4. FASCIA  
5. VENEER



Dark Mesh Aluminum with Gloss Dark Oak

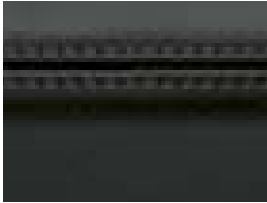
1. Seat trim applies to seats and door trim inserts

2. Upper fascia applies to dashboard and upper door trims. Contrast stitch when available applies to upper fascia and center console.

Fascia (Knurled Aluminum or Dark Mesh Aluminum) linked to model choice.  
For full fascia and veneer options see page 46.

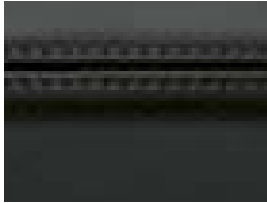
XF

SEAT [BOND GRAIN LEATHER]



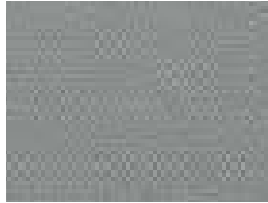
Warm Charcoal

UPPER FASCIA WITH STITCH

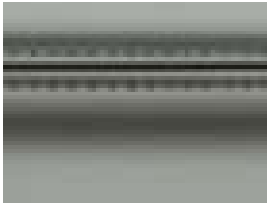


Warm Charcoal with Warm Charcoal

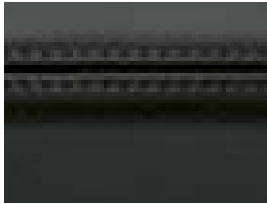
HEADLINING



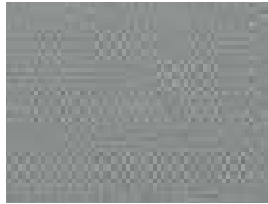
Dove



Dove



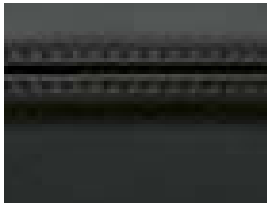
Warm Charcoal with Warm Charcoal



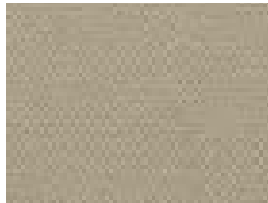
Dove



Barley



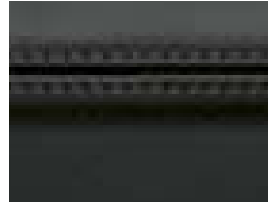
Warm Charcoal with Warm Charcoal



Canvas

XF PORTFOLIO PACKAGE

SEAT [SOFT GRAIN LEATHER]



Warm Charcoal

UPPER FASCIA WITH STITCH



Warm Charcoal with Ivory

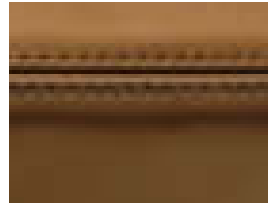
HEADLINING



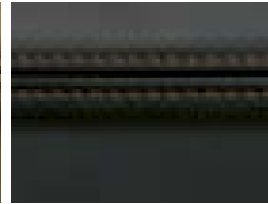
Canvas or



Jet



London Tan



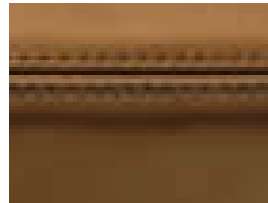
Warm Charcoal with London Tan



Canvas or



Jet



London Tan



Navy with London Tan

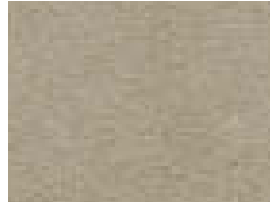
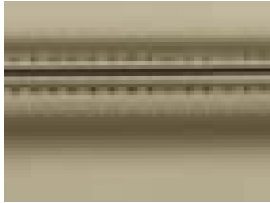


Canvas

XF PORTFOLIO PACKAGE CONTINUED

SEAT [SOFT GRAIN LEATHER]

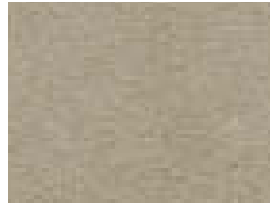
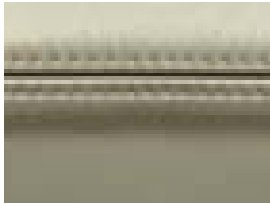
UPPER FASCIA WITH STITCH HEADLINING



Barley

Truffle with Barley

Canvas



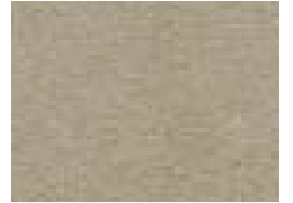
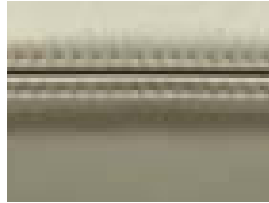
Ivory

Navy with Ivory

Canvas

SEAT [SOFT GRAIN LEATHER]

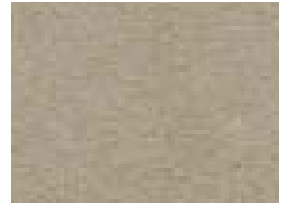
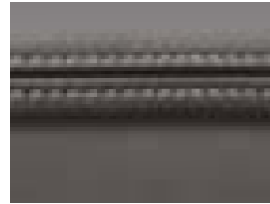
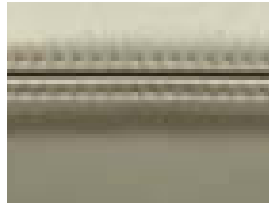
UPPER FASCIA WITH STITCH HEADLINING



Ivory

Truffle with Ivory

Canvas



Ivory

Oyster with Ivory

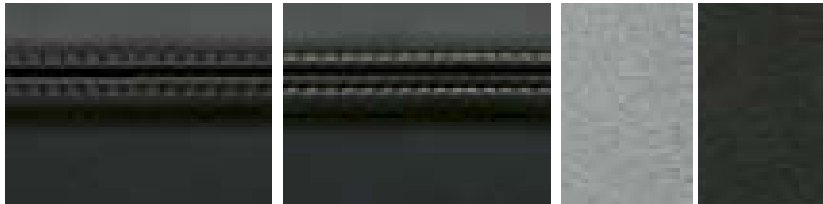
Canvas



XF SPORT PORTFOLIO PACKAGE

SEAT [SOFT GRAIN LEATHER]

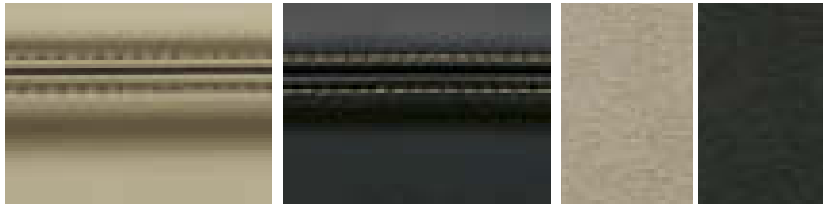
UPPER FASCIA WITH STITCH HEADLINING



Warm Charcoal

Warm Charcoal with Ivory

Dove or Jet



Barley

Warm Charcoal with Barley

Canvas or Jet



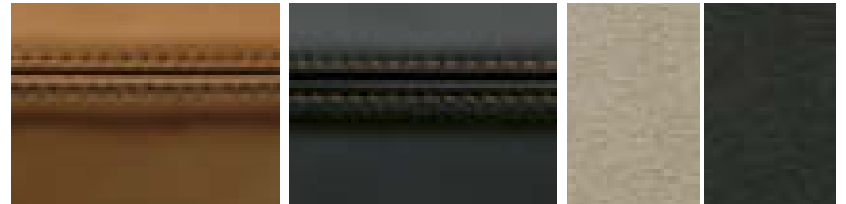
Red Zone and Warm Charcoal

Warm Charcoal with Red Zone

Dove or Jet

SEAT [SOFT GRAIN LEATHER]

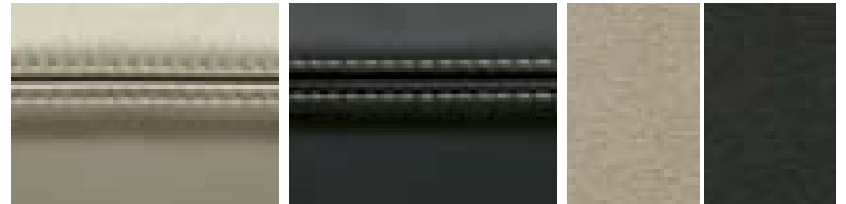
UPPER FASCIA WITH STITCH HEADLINING



London Tan and Warm Charcoal

Warm Charcoal with London Tan

Canvas or Jet



Ivory

Warm Charcoal with Ivory

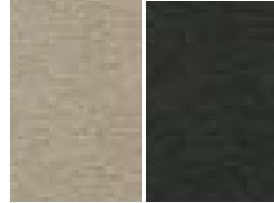
Canvas or Jet

**XF SUPERCHARGED**

SEAT [SOFT GRAIN LEATHER]

UPPER FASCIA WITH STITCH

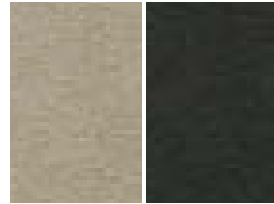
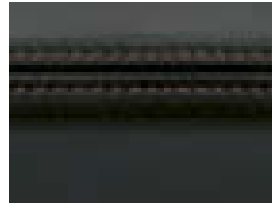
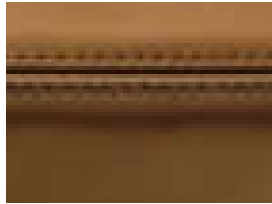
HEADLINING



Warm Charcoal

Warm Charcoal with Ivory

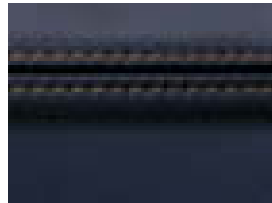
Canvas or Jet



London Tan

Warm Charcoal with London Tan

Canvas or Jet



London Tan

Navy with London Tan

Canvas



Barley

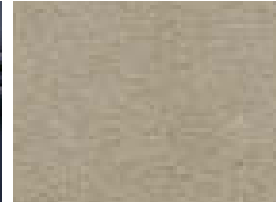
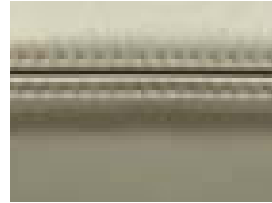
Truffle with Barley

Canvas

SEAT [SOFT GRAIN LEATHER]

UPPER FASCIA WITH STITCH

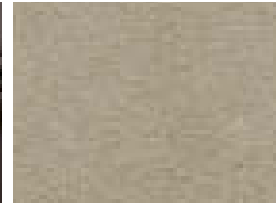
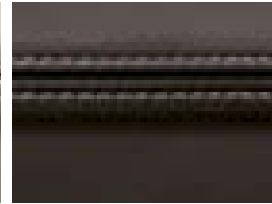
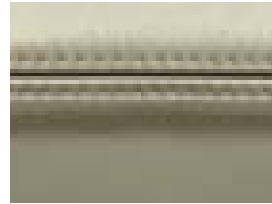
HEADLINING



Ivory

Navy with Ivory

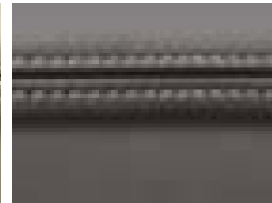
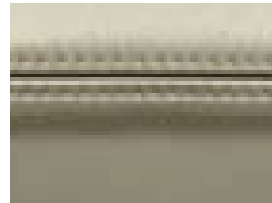
Canvas



Ivory

Truffle with Ivory

Canvas



Ivory

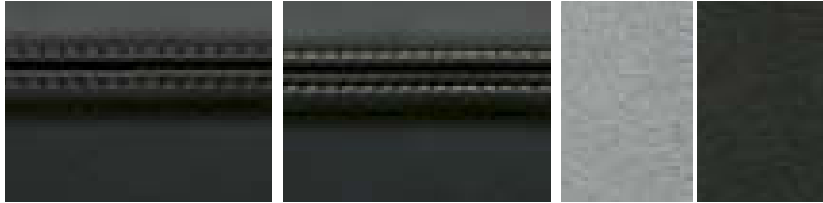
Oyster with Ivory

Canvas

XF SUPERCHARGED WITH SPORT UPGRADE

SEAT [SOFT GRAIN LEATHER]

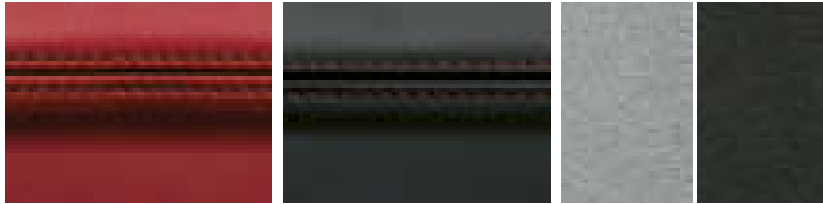
UPPER FASCIA WITH STITCH HEADLINING



Warm Charcoal

Warm Charcoal with Ivory

Dove or Jet



Red Zone and Warm Charcoal

Warm Charcoal with Red Zone

Dove or Jet



London Tan and Warm Charcoal

Warm Charcoal with London Tan

Canvas or Jet

SEAT [SOFT GRAIN LEATHER]

UPPER FASCIA WITH STITCH HEADLINING



Ivory

Warm Charcoal with Ivory

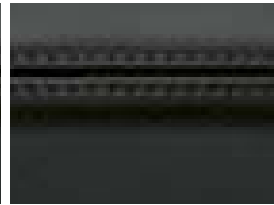
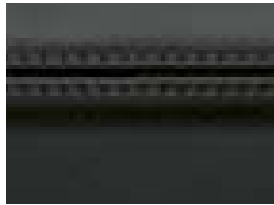
Canvas or Jet

XFR

SEAT [SOFT GRAIN LEATHER]

UPPER FASCIA WITH STITCH

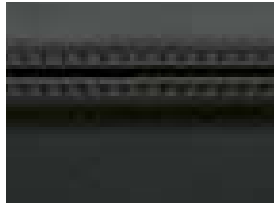
HEADLINING



Warm Charcoal

Warm Charcoal with Warm Charcoal

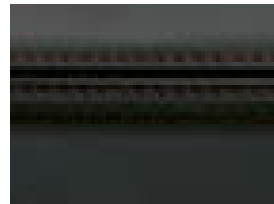
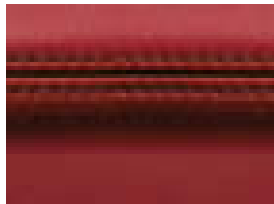
Dove or Jet



Warm Charcoal

Warm Charcoal with Ivory

Dove or Jet



Red Zone and Warm Charcoal

Warm Charcoal with Red Zone

Dove or Jet

SEAT [SOFT GRAIN LEATHER]

UPPER FASCIA WITH STITCH

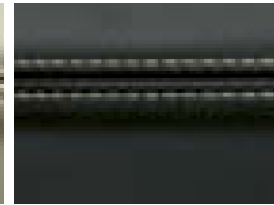
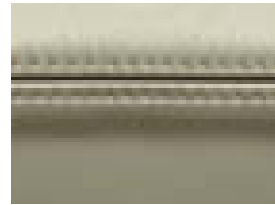
HEADLINING



London Tan and Warm Charcoal

Warm Charcoal with London Tan

Canvas or Jet



Ivory

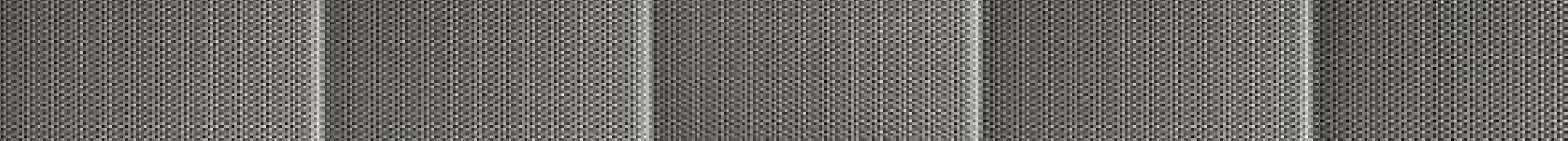
Warm Charcoal with Ivory

Canvas or Jet

All seat colors available in soft grain leather.



INTERIOR SHOWN: XFR INTERIOR WITH WARM CHARCOAL SOFT GRAIN LEATHER SEATS WITH IVORY CONTRAST STITCH, UPPER FASCIA IN WARM CHARCOAL, DOVE HEADLINING AND DARK MESH ALUMINUM WITH CARBON FIBER VENEER



## XF FASCIA AND VENEERS

Knurled Aluminum with  
Satin Rosewood

Knurled Aluminum with  
Gloss Burl Walnut

Knurled Aluminum with  
Gloss Figured Ebony

Knurled Aluminum with  
Gloss Rich Oak (Supercharged Only)

Knurled Aluminum with  
Piano Black



## XFR FASCIA AND VENEERS

Knurled Aluminum with  
Carbon Fiber

Dark Mesh Aluminum with  
Gloss Dark Oak

Dark Mesh Aluminum with  
Piano Black

Dark Mesh Aluminum with  
Carbon Fiber

# XF OWNERSHIP EXPERIENCE

Service, assurance, and peace of mind are all part of the pride of owning your new XF.

## TOTAL CARE

Seamless support for your new Jaguar car, so you can relax and drive. A combination of vehicle warranty, paint and corrosion protection and Jaguar Assistance.

## WARRANTY<sup>(1)</sup>

Jaguar Cars offers a comprehensive, 4 year/50,000 miles New Vehicle Limited Warranty as well as a 6-year/unlimited mileage Corrosion Protection Limited Warranty.

## JAGUAR ASSISTANCE<sup>(2)</sup>

Handled by Jaguar-trained specialists, this incident management program provides complimentary towing service, jump-starts, lockout assistance, gasoline delivery, tire changes and trip routing help, 24/7. Just call 1.800.4.JAGUAR.

## JAGUAR FINANCIAL GROUP

Available both for individuals and businesses, Jaguar Financial Group offers leasing and financing packages that can meet most needs. Ask your local authorized Jaguar retailer for details.

## JAGUAR RETAILER EXPERIENCE

Jaguar ownership begins with a first class retailer experience. It continues with the outstanding support from retailer service teams dedicated to maintaining your vehicle's condition and performance. You will find only the best factory-trained technicians at authorized Jaguar retailers.

## JAGUAR VEHICLE ACCESSORIES<sup>†</sup>

Jaguar vehicle accessories enable you to personalize your car, to create a driving experience that is even more individually rewarding. All Jaguar accessories are tested rigorously for safety and durability in the most arduous of climates and conditions. With a comprehensive range of styling options and interior and exterior accessories, you can tailor your Jaguar vehicle to suit your personal style. What's more, every accessory is covered for 12 months unlimited mileage or the balance of the New Vehicle Limited Warranty, whichever is greater. Any genuine Jaguar Accessories (excluding gift items and luggage from Jaguar Collection) supplied and fitted by an authorized Jaguar retailer within one month or 1,000 miles (whichever occurs first) of a new vehicle being put into service will benefit from the same warranty terms and duration as the New Vehicle Limited Warranty. Accessories purchased outside of this period will be subject to 12 month unlimited mileage warranty.

## JAGUAR MAGAZINE

Jaguar Magazine is the official magazine of Jaguar Cars. It features stories about the full Jaguar line-up and the worlds of luxury, style, design and travel. Also available, a fully interactive iPad® app takes the very best of the print edition of the Magazine and adds extra images and exclusive information, allowing you to explore the world of Jaguar in a whole new way.

## JAGUARUSA.COM

Visit the official web site to access the retailer locator, car configurator, price lists, model comparisons and more. Sign up for "Keep Me Informed" to receive all the latest news and special offers.

<sup>(1)</sup>See your authorized Jaguar dealer for complete terms and conditions of limited warranty coverage.

<sup>(2)</sup>All elements of Jaguar Assistance are available only while your Jaguar New Vehicle Limited Warranty is in effect.

<sup>†</sup>All Jaguar approved accessories are rigorously tested to the same exacting standards as those applied to our vehicles. Performance in extreme hot and cold temperatures, corrosion resistance, impact and airbag deployment highlight some of the exhaustive product testing carried out so that Accessories are both durable and importantly, continue to comply with current laws.





#### IMPORTANT NOTICE

Jaguar Cars Limited is constantly seeking ways to improve the specification, design and production of its vehicles and alterations take place continually. Whilst every effort is made to produce up-to-date literature, this brochure should not be regarded as an infallible guide to current specifications, nor does it constitute an offer for the sale of any particular vehicle. Distributors and dealers are not agents of Jaguar Cars Limited by any express or implied undertaking or representation.

Comparisons are based on manufacturer's own data and testing.

#### ENVIRONMENTAL INNOVATION AT JAGUAR

Jaguar is proud to continue the company's tradition with its approach to Environmental Innovation. From the choice of lightweight materials and lean production methods to the efficiency of its engines and designs, Jaguar is committed to operating as a more sustainable business and reducing its overall environmental impact.

Jaguar's flagship XJ model was the first in the company to achieve ISO 14040, the international standard for vehicle 'whole life cycle' assessment. This certification measures the environmental impact of XJ from component material sourcing and manufacturing process, through its driven life time, to final disposal. But that's not all. Every new Jaguar vehicle is designed to be 85% recyclable and reusable, in addition to 95% recoverable and reusable with 10% for energy generation.

Jaguar is committed to reducing dependency on fossil fuels, using fewer resources and creating less waste. Already the manufacturing assembly CO<sub>2</sub> emissions of each Jaguar built in the UK since 2009 is offset. For every ton of CO<sub>2</sub> emitted in the assembly process, Jaguar invests in carbon reduction projects that reduce an equivalent ton of CO<sub>2</sub> elsewhere. Offsetting allows Jaguar to take action now, to reduce its impact on the environment, as part of an integrated carbon management plan. This company plan includes targets to reduce operating CO<sub>2</sub> emissions and waste to landfill by 25% by 2012, water consumption by 10% by 2012 and fleet average tailpipe CO<sub>2</sub> emissions by 25% by 2015, based on 2007 levels.

But it doesn't stop there. World class manufacturing facilities certified to ISO 14001 since 1998, transport miles have been cut from delivery routes and new ways are being introduced to produce energy from food waste at our Gaydon site in the UK. That's Environmental Innovation at Jaguar.

The Bluetooth® word mark and logos are owned by Bluetooth SIG, Inc. and any use of such marks by Jaguar Cars Limited is under license.

Meridian™ is a trademark of Meridian Audio Ltd.

'Trifield' and the 'three fields' device are trademarks of Trifield Productions Ltd.

iPad®, iPod® and iPhone® are trademarks of Apple, Inc. registered in the U.S. and other countries.

<sup>1</sup>These features are not a substitute for driving safely with due care and attention, and will not function under all circumstances, speeds, weather and road conditions. The driver should not assume that these features will correct errors of judgment in driving. Please consult your vehicle's owner's manual or your local authorized Jaguar retailer for more details.

<sup>2</sup>Always obey local speed limits.

<sup>3</sup>Driving while distracted can result in loss of vehicle control. Do not operate, adjust or view the navigation or multimedia systems under conditions that will affect your safety or the safety of others. Only use mobile phones, and other devices, even with voice commands, when it is safe to do so.

Jaguar Land Rover North America, LLC  
555 MacArthur Boulevard,  
Mahwah, NJ 07430-2327  
JAGUARUSA.COM

JLM/09/02/30/1112



JAGUARUSA.COM  
800.4.JAGUAR

  
JAGUAR